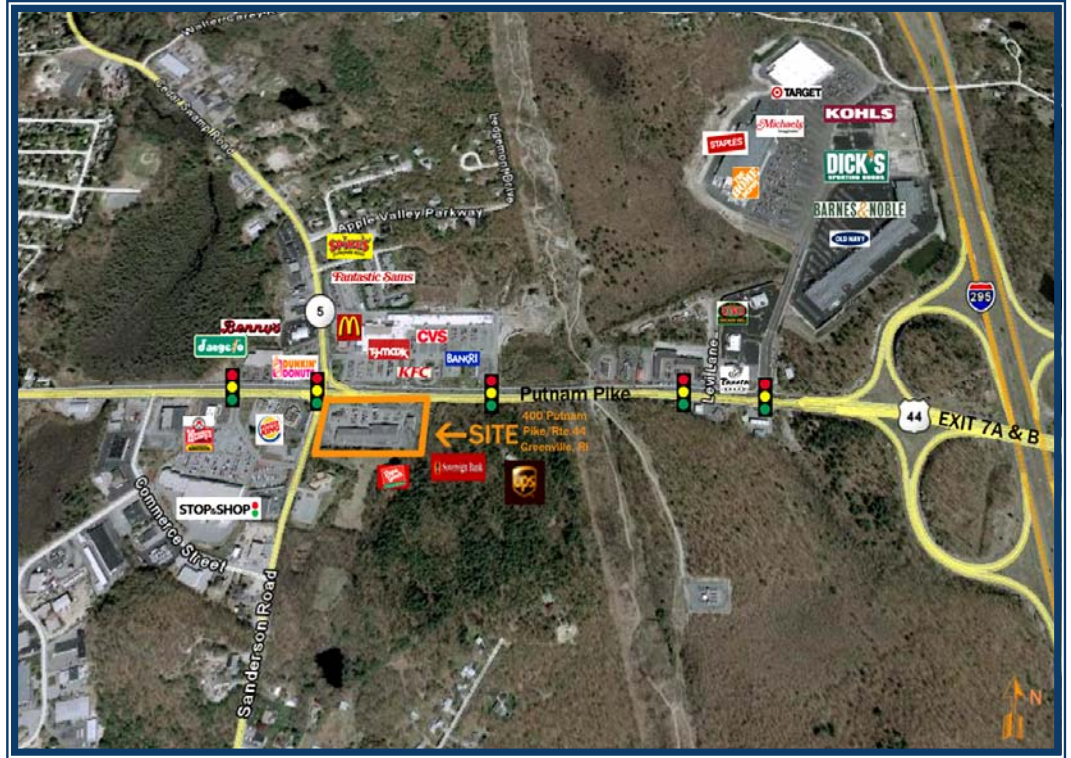


# HAYES & SHERRY

REAL ESTATE SERVICES

## Smithfield Commons 400 Putnam Pike/Route 44 Smithfield, Rhode Island

Available  
for  
Lease



**Property Highlights:**

**SMITHFIELD COMMONS** is a 35,130 square foot strip center at the signalized intersection of Routes 44 and 5 in Smithfield, RI. The center is anchored by Papa Gino's, Sovereign Bank and UPS. The center is approximately 1/2 mile west of I-295/Route 44 intersection.

**Retail Space:** 35,130 square foot center

**Available Space:** 15,000 sq. ft. end cap space

**Parking:** 6.8 spaces/1,000 sq. ft.

**Traffic (ADT):** 49,100  
(28,100 Route 44 / 21,000 Route 5)

**Rent:** Negotiable

**Demographics:**

	<u>POPULATION</u>	<u>Med HH INCOME</u>
3 Miles	35,884	\$ 59,336
5 Miles	111,322	\$ 54,463

*For more information, please contact:*

**Bill Greene**  
401-273-1980  
BGreene@hayessherry.com

**Dave Lucivero**  
410-273-1980  
DLucivero@hayessherry.com

**HAYES & SHERRY**

146 Westminster Street, 2nd Floor  
Providence, RI 02903  
Tel: 401.273.1980  
Fax: 401.421.4207  
www.hayessherry.com

Information set forth is from sources we deem reliable. This property is offered subject to prior sale, lease or withdrawal without notice or change in prices and conditions.

# HAYES & SHERRY

REAL ESTATE SERVICES

## Smithfield Commons

400 Putnam Pike/Route 44

Smithfield, Rhode Island

### TENANTS:

1. Papa Gino's 3,300 sf.
2. **Vacant** 15,000 sf.
3. Verizon 1,330 sf.
4. H&R Block 1,330 sf.
5. Fantastic Sams 1,330 sf.
6. D&H Therapy 1,330 sf.
7. Urgent Medical Care 3,990 sf.
8. Top Cleaner & Tailoring 2,660 sf.
9. The UPS Store 1,330 sf.
10. Tin Tsin Restaurant 1,330 sf.
11. Sovereign Bank 2,200 sf.

**TOTAL SF: 35,130**

**Available**

