

HAYES & SHERRY

REAL ESTATE SERVICES

387 West Fountain Street

Providence, Rhode Island

Available
for
Lease



Historic West Side Redevelopment

PROPERTY DESCRIPTION:

THIS 40,000 SQUARE FOOT HISTORIC REDEVELOPMENT SPANS TWO LEVELS AND COMES COMPLETE WITH NEW WINDOWS, SKYLITES, HVAC, MECHANICAL SYSTEMS AND FIRE SAFETY SYSTEMS.

LOCATION:

LOCATED ON PROVIDENCE'S EMERGING WEST SIDE, THE PROPERTY IS ONLY MINUTES FROM THE CENTRAL BUSINESS DISTRICT AND IS SERVICED BY EXCELLENT ACCESS FROM INTERSTATE 95.

SF AVAILABLE:

Up to 17,500 SQUARE FEET

RENTAL RATE:

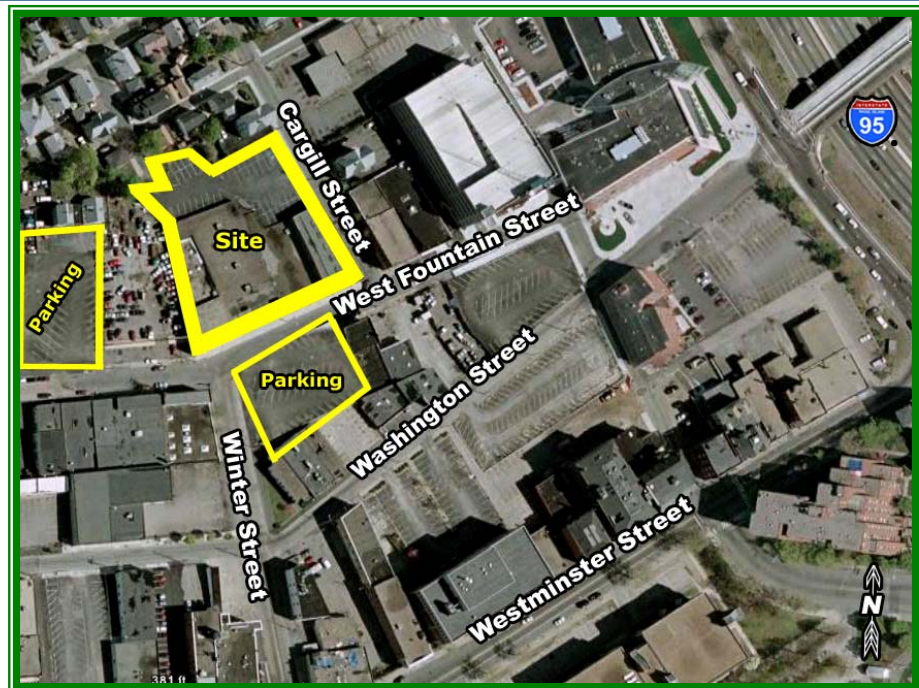
STARTING AT \$15.00/SF, NET UTILITIES & JANITORIAL

AVAILABILITY:

IMMEDIATE

PARKING:

4/1,000 SF LEASED



FOR MORE INFORMATION OR TO ARRANGE A TOUR OF THIS PROPERTY, CONTACT:

Pete Hayes
PHayes@hayessherry.com
401.273.1980

Mick Hogan
MHogan@hayessherry.com
401.273.1980

HAYES & SHERRY

146 Westminster Street, 2nd Floor
Providence, RI 02903
Tel: 401.273.1980
Fax: 401.421.4207
www.hayessherry.com

Information set forth is from sources we deem reliable. This property is offered subject to prior sale, lease or withdrawal without notice or change in prices and conditions.

HAYES & SHERRY

REAL ESTATE SERVICES

387 West Fountain Street

Providence, Rhode Island

