



FOR LEASE

1485 South County Trail

East Greenwich, RI 02818

± 11,000 SF Available (Sub-dividable)

Lease Price: ±\$24.00/SF, MG

NEW CONSTRUCTION

Property Highlights

- FULLY RENOVATED MIXED-USE PROPERTY
- LOCATED IN HEART OF THE “MEDICAL MILE” IN EAST GREENWICH
- AMPLE ON-SITE PARKING
- SUITES AVAILABLE FROM 2,000 – 4,000 SF
- CUSTOM BUILD-OUTS AVAILABLE
- PROFESSIONAL PROPERTY MANAGEMENT
- EXTERIOR SIGNAGE AVAILABLE

Space Features

- NEW CONSTRUCTION
- FLEXIBLE FOOTPRINT
- LARGE WINDOWS
- TOP QUALITY HVAC SYSTEM, CONNECTIVITY AND FIT-OUT



For more information, please contact:

Dave Lucivero
Senior Vice President
401.273.2068
dlucivero@hayessherry.com

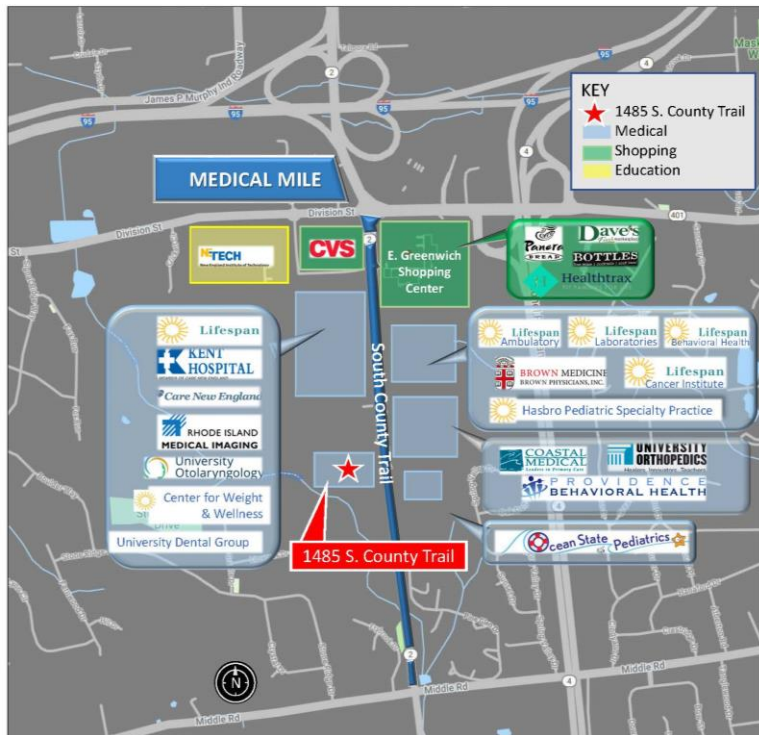
Matt Fair
Senior Vice President
401.273.2053
mfair@hayessherry.com

146 Westminster Street, 2nd floor
Providence, RI 02903
phone: 401.273.1980
hayessherry.com

FOR LEASE

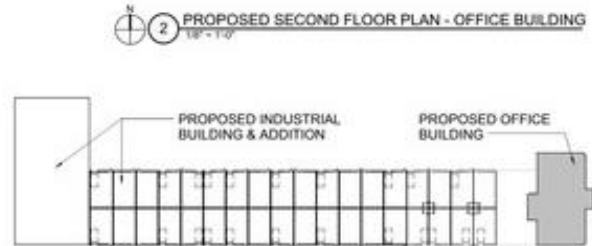
1485 South County Trail

East Greenwich, RI 02818

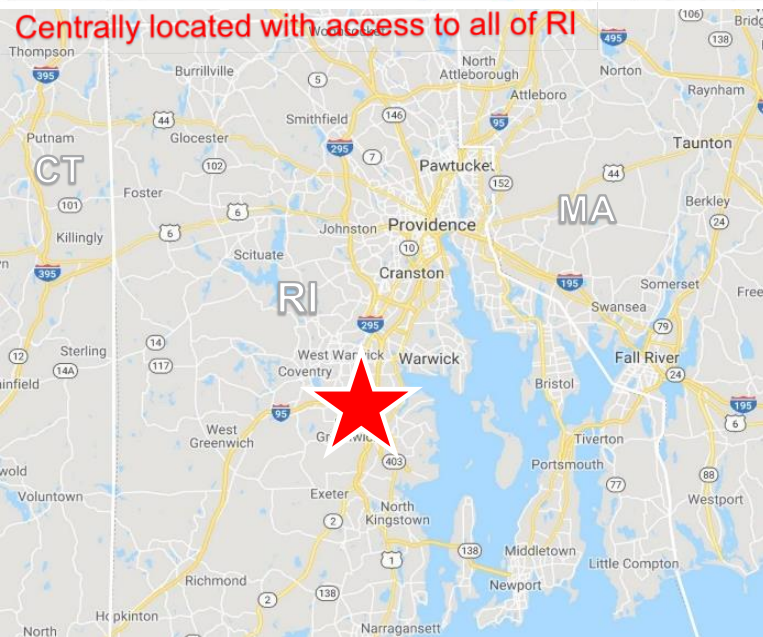


1 PROPOSED FIRST FLOOR PLAN - OFFICE BUILDING
1/8" = 1'-0"

2 PROPOSED SECOND FLOOR PLAN - OFFICE BUILDING
1/8" = 1'-0"



3 KEY PLAN
1/8" = 1'-0"



Centrally located with access to all of RI