

1,588 SF Freestanding Retail
Sale Price: \$499,900
Property Highlights

- 1,588 SF Building on 0.90 acres of land
- Heavy traffic
- Strong demos
- Perfect for Office/Retail use
- Easy ingress and egress

Traffic: 15,500 vpd Nooseneck Hill Road

5 Mile Information

Demographics

	1 mi radius	3 mi radius	5 mi radius
Population	4,534	27,100	79,039
Households	2,152	12,194	34,974
Population Median Age	46.4	45.8	44.3
5 Yr Pop Growth (Total%)	2.0%	0.8%	0.7%

For more information, please contact:

Dave Lucivero
 Senior Vice President
 401 273 2068
 dlucivero@hayessherry.com

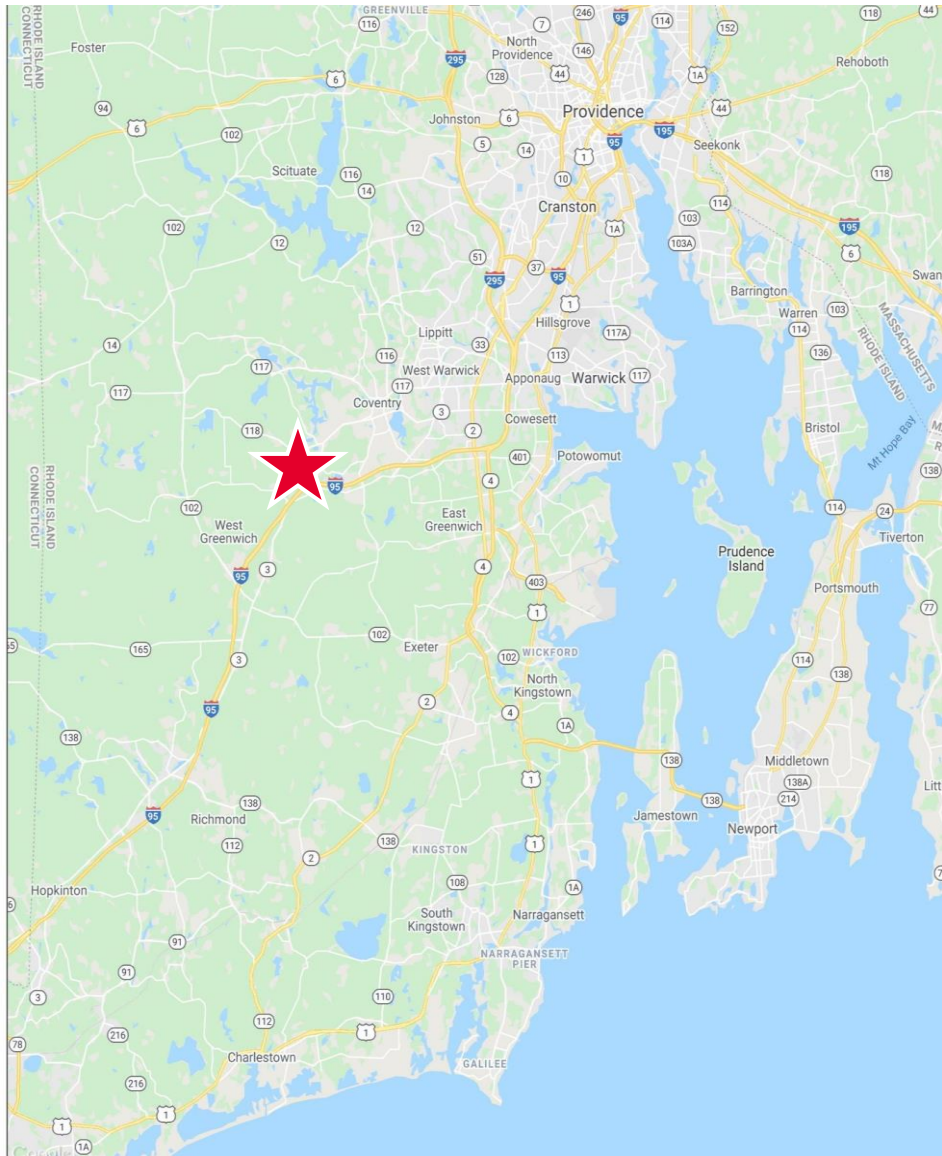
 146 Westminster Street, 2nd floor
 Providence, RI 02903
 phone: 401 273 1980
 www.hayessherry.com

FOR SALE

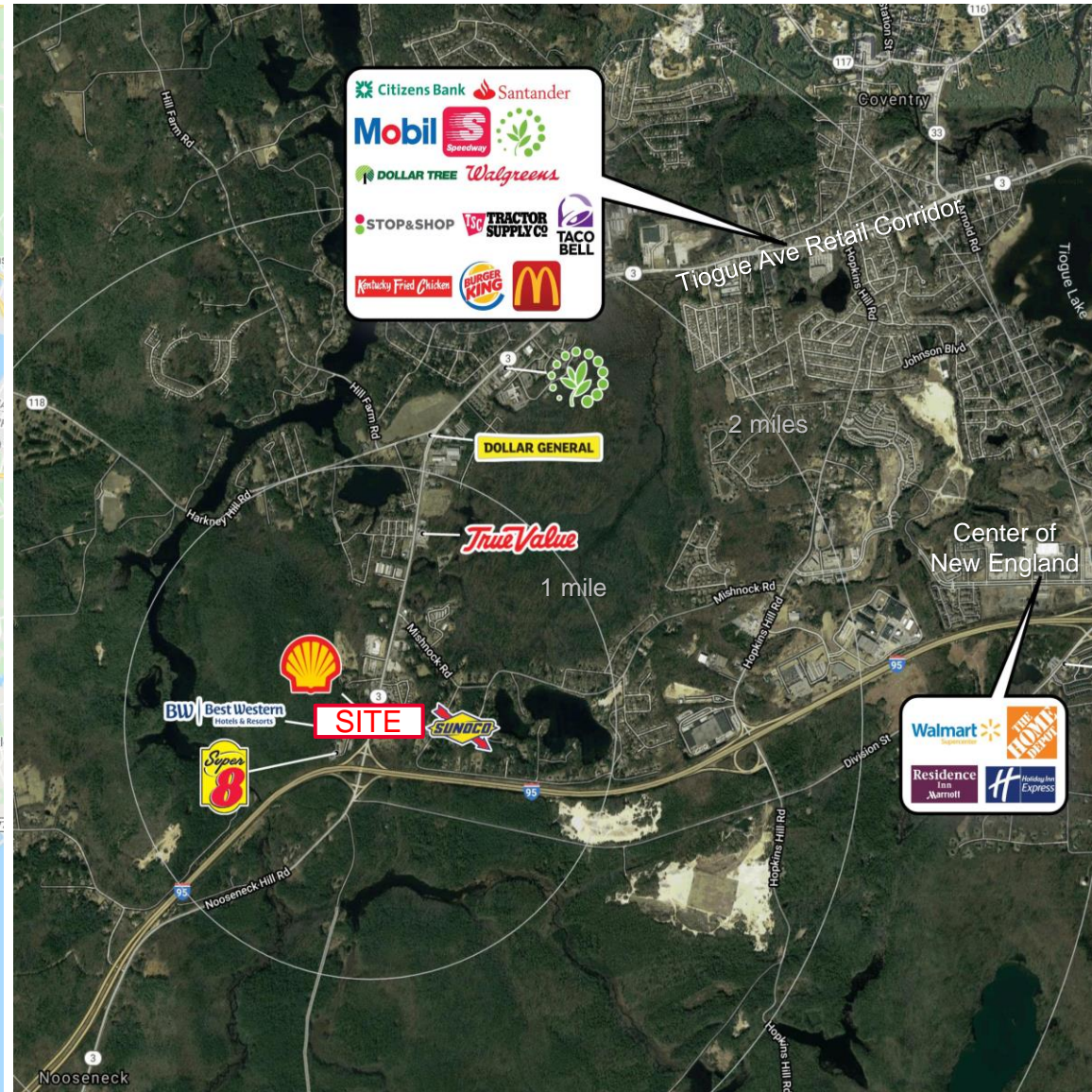
95 Nooseneck Hill Road

West Greenwich, RI 02817

Location Map



Aerial - Trade Area



For more information, please contact:

Dave Lucivero
Senior Vice President
401 273 2068
dlucivero@hayessherry.com